



BRIDESTOWE PRIMARY SCHOOL

'With Respect and Ambition, We Flourish Together.'

Snowy Owls Homework

Spring 1 2024

Dartmoor
Multi Academy
Trust

...everyone in our Trust.



WEEKLY EXPECTATIONS

Reading and Spelling	Please read with your child at least 5 times per week. In the front of their yellow reading record are some comprehension questions that you can adapt to the book that your child is reading. Please record every time your child reads to you – no matter their age! Children will bring home a list of words each week these will be linked to the class spelling focus – please explore and use these words with your child at home.
Maths	Your child has been sent home with a mathematics folder. Each sheet correlates with the work that they are doing in class that week. Therefore, please only complete the sheet with the correct week on . Children must practise their times table facts ahead of their weekly test which will now be on a Monday morning. Please return the folder by 7/2/24 so your class teacher can set the following half terms tasks.

HALF TERMLY PROJECTS

These activities are linked to the children's wider curriculum learning. Please choose one project from below or design your own focus. Completed projects need to be in school on Wednesday 7th February ready to share with the class and families at 3:15.

What does a Chinese dragon look like? Draw/paint/make a model of one to share with the class.



Geographical Skills: draw a picture of the country of China showing which continent it is in and the location compared to the UK.



Research Chinese food. Find something that you would like to try/eat and make it at home with an adult. Write the recipe and evaluate what you and your family thought of it.



Watch the BBC Teach clip: [History KS2: Introducing the Shang Dynasty - BBC Teach](#)
Write down 5 facts which you have learnt from this video. Can teach someone at home about this period in history?



Make a presentation of the similarities and differences between modern day China and China during the Shang dynasty. You can compare any relevant features such as: Government, religion, dress, medicine, food, rulers, farming, traditions and customs.



BRIDESTOWE PRIMARY SCHOOL

'With Respect and Ambition, We Flourish Together.'

Snowy Owls Homework

Spring 1 2024

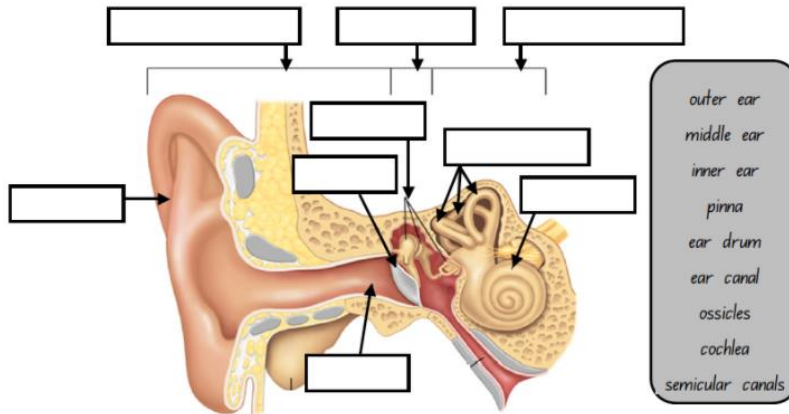
Dartmoor
Multi Academy
Trust
...everyone in our Trust.



We can use sign language to communicate with people who are unable to hear. Can you learn some sign language?



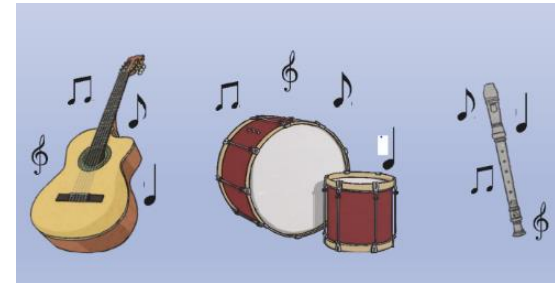
Create an explanation text or labelled diagram of the ear showing how we hear things. Can you explain how we hear to someone else?



Watch this clip to see to see how the different families of musical instrument create different sounds.

[Sounds made from different types of musical instruments - KS2 Science - BBC Bitesize](#)

How do the musical instruments make sounds? Think of some words you could use to explain this.



Have a go at making your own instrument – how does it produce sound?

